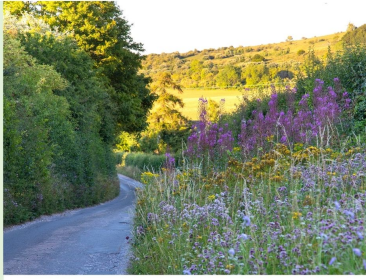


6 MEADOWS & VERGES



COLOUR THE ROADS

With more than 200,000ha, UK road verges have a combined area greater than the entire county of Oxfordshire. They present a vital refuge for pollinators, wildlife and especially threatened species.

Almost 50% of the UK's wildflowers exist on the side of our roads. But it could be much more with a change in modern management practice.

With the right management of road verges **400 Billion** more wild flowers could grow along our roads. Ideally verges should be cut only **twice a year**.

LET IT GROW

97% of Britain's wildflower meadows have been lost since WW2. Populations of bumblebees and other pollinators are declining and many species of wildflower are in danger of disappearing. 'Re-wilding' spaces like grass road verges or even garden lawns would make a great step towards creating habitats where pollinators and other insects could thrive. Wildflower meadows are also beautiful areas to enjoy, transforming otherwise dull verges into a sea of colour.

WHY WILD POLLINATORS ARE SO IMPORTANT

Contrary to popular belief, honey bees play a fairly small role in plant pollination. Wild pollinators like bumblebees, butterflies and moths pollinate most of our food crops and also ensure the survival of wild plants. The drastic decline in pollinators is connected to habitat loss, intensive farming, urbanisation and heavy use of chemicals for pest control.



A common carder bee feeding on red clover.

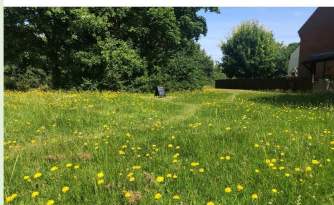
85-95% of the UK's insect-pollinated crops rely on wild pollinators

RESTORING PART OF THE MARLBROOK MEADOW

Did you know - before Marlbrook Estate was built, there was a beautiful wild flower meadow on the land? A group of Watlington citizens is returning an area of the Marlbrook Green to a wild meadow, with paths running through and a sitting area. It is hoped there could be an annual community scything event each year to maintain it and bring people together...



Common Bird's-foot-trefoil



CREATED / SUPPORTED BY:

dp architects
design | planning | architecture



Support Green Plan actions!



Donate here

WHAT YOU CAN DO!

Have a 'No Mow May' or leave patches to grow and discover the wild flowers popping-up in your garden!

Build a bee-hotel and observe who moves in!

Plant for pollinators: Grow more nectar-rich flowers, shrubs and trees to provide for pollinators throughout the year.

Avoid the use of pesticides!

Support the Marlbrook Meadow Project! Get in touch with Andrea or Josh at watlingtonclimateaction@gmail.com, to find out how you can help!

Photo credit: Nicola Schafer (top), Josh Robinson-Ward